



---

# OPERATOR SERIES BLACK

TIMELESS DESIGN AND SMART TECHNOLOGY



**TORMATIC®**  
Pure Drive

## CONTENTS

### GARAGE DOOR OPERATORS

BLACK 600 / 800 / 1000	04 / 05
BLACK 1200	06 / 07
Accessories	08 – 10



# BLACK 600 BLACK 800 BLACK 1000

## THE OPTIMAL SYBIOSIS OF DESIGN AND TECHNOLOGY

The TORMATIC BLACK operators combine advanced technology with modern energy efficiency. Not only will the reduced power consumption protect the environment, it will also benefit your wallet. The BLACK operators will, of course, also convince by their technical skills. The practical 3-button programming will allow you to make settings at the operator in an easy and speedy way. Additionally integrated special functions will ensure an extremely high operating speed with optimal gate adjustment and smooth running properties.



01

### To be on the safe side

Our new AES 128-bit codification satisfies the highest safety demands and provides protection reliably against undesired entry from the outside.

02

### Automatic switch-off

The automatic switch-off will stop the gate in the event of an unexpected obstacle. This will provide reliable protection and safety for the entire family.



03

### The LED lighting

We use only top-quality lighting elements. A lighting technology that distinguishes itself by its long service life and strong light intensity.

LED

04

### The emergency release

An emergency release will enable you to access your garage in the event of a power cut in an easy and speedy way, with a high degree of safety being afforded all the time. The keys included in the supply will enable you to separate the operator from the gate, so that it can be opened manually (optional).



## AT A GLANCE

- Operator for up-and-over and sectional doors
- Suitable for doors of up to 10 m<sup>2</sup> (600), 14 m<sup>2</sup> (800) and for heavy doors up to 17 m<sup>2</sup> (1000)
- Automatic closing function can be enabled
- High-speed function of up to 24 cm/sec. in OPEN position
- Smooth door running due to ramp function
- High-class door-select function

CE

## TECHNICAL DATA

600 | 800 | 1000

Push and pull force	600 N   800 N   1000-1200 N
Power supply	230 V / 50 Hz
Operating voltage	0.9 A   1.25 A   2 A
Power consumption at work	160 W   240 W   410 W
Power consumption at rest	< 0.5 W
Running speed	17 - 24 cm/sec.
Duty cycle	30 % ED
Safety features	Automatic force adjustment
Control unit	Micro-processor controlled Soft Start / Soft Stop Automatic closing
Control sequence	1 <sup>st</sup> pulse = operator is running 2 <sup>nd</sup> pulse = operator stops 3 <sup>rd</sup> pulse = direction reversal
Radio control	AES, 433 MHz, KeeLoq rolling code
Lighting	1.6 W LED
Lighting phase during operation	60 sec., factory-set
Further functions	Door-select function, ventilation position, automatic closing

## THE SET

- Motor head
- Door fitting for up-and-over and sectional doors
- Transmitter BLACK Remote (BLACK 800: 2 x transmitter) <sup>★1)</sup>
- Receiver module, pluggable (UHF, 433 MHz)
- BLACK 600 is also available as a **complete set**, including pre-mounted 3-part toothed belt track.



1) Hand transmitter BLACK is approximately available from 4th quarter 2017. The MAX 43-2 (64-BIT codification) is included in the actual scope of delivery.

# BLACK 1200

## AN EXCEPTIONAL TALENT FOR SPECIAL SOLUTIONS

The BLACK 1200 operator is the "allrounder" among the TORMATIC garage door operators. It is suitable for underground and collective garages with up to 50 parking lots, for industrial sectional gates and for special solutions, such as double-wing garage doors. The operator makes it possible to connect all types of pulse generators. Not only does the function Automatic closing exist, there is also an option to connect a traffic signal control. A highlight of the BLACK 1200 operator is a special personal protection function, which will make it possible to interrupt with a pulse the pre-set hold-open time in the event of imminent danger and to close the gate system at once. It goes without saying that a garage lighting system and a warning lamp can be connected with the BLACK 1200 operator. The number of door cycles run can be read out to facilitate the problem-free gate maintenance.



01

### Easy operation and safety

The finger scanner will afford the highest degree of safety. Up to 99 fingerprints can be stored. The access to the garage is thus as easy and comfortable as never before. In addition to that, you need no longer memorize any codes.



02

### The 3-button programming

Is there anything better than a product that is comfortable to use and can be installed simply and quickly into the bargain? Our proven 3-button programming concept has been retained for menu navigation of all TORMATIC operators – a big relief.



03

### The traffic signal control

You have a narrow garage access or an underground garage that is used by several persons? No problem whatsoever! Just connect the red-green signal system with the A 800. This will ensure that there is no oncoming traffic and that you can enter the garage safely.



04

### The signal light

The LED signal light is perfectly suitable as a preliminary warning or Gate-Open-Message (TAM). With advanced equipment being installed, the signal light helps saving a considerable amount of energy.

## AT A GLANCE

Suitable for underground car parks with max. 50 parking spaces, industrial sectional gates and special solutions

Automatic closing function can be enabled

Smooth running due to ramp function

High-Class door-select function

Relay contact in OPEN and CLOSE position

High-speed function of up to 24 cm/sec. in OPEN position

Traffic light control A 800 III retrofittable

## CE TECHNICAL DATA

Push and pull force	1000 - 1200 N
Power supply	230 V / 50 Hz
Operating voltage	2 A
Power consumption at work	410 W
Power consumption at rest	< 4 W
Running speed	17 - 24 cm/sec.
Duty cycle	30 % ED
Safety features	Automatic force adjustment
Control unit	Micro-processor controlled Soft Start / Soft Stop Automatic closing
Control sequence	1 <sup>st</sup> pulse = operator is running 2 <sup>nd</sup> pulse = operator stops 3 <sup>rd</sup> pulse = direction reversal
Radio control	AES, 433 MHz, KeeLoq rolling code
Lighting	1,6 W LED
Lighting phase during operation	60 sec., factory-set
Further functions	Door-select function, traffic light control A 800 III (optional)

## THE SET

Motor head

Door fitting for up-and-over and sectional doors

Receiver module, pluggable (UHF, 433 MHz)

Adapter for UKW module

# THE EXTENSIVE ACCESSORY RANGE

HERE NOT ONLY HIGH REQUIREMENTS ON COMFORT AND SAFETY ARE MET BUT A PARTICULAR FOCUS IS ALSO PLACED ON DESIGN AND AESTHETICS. DISCOVER THE TRADITIONAL TORMATIC QUALITY ON WHICH YOU CAN RELY EVERY DAY OF YOUR LIFE.

## RADIO SYSTEMS



**Hand transmitter BLACK Remote**

3-channel hand transmitter, 433 MHz, with KeeLoq rolling code

201220-02-1-50



**Hand transmitter Design**

2-channel hand transmitter in carbon optics, 433 MHz, with KeeLoq rolling code

020410-31-3-32



**Hand transmitter MAX 43-2**

2-channel hand transmitter, 433 MHz, with KeeLoq rolling code

020429-31-3-32



**Hand transmitter MAX 43-4**

4-channel hand transmitter, 433 MHz, with KeeLoq rolling code

020431-31-3-32



**Wall mount for hand transmitters**

With sun visor clip for MAX 43-2, MAX 43-4 <sup>(1)</sup> and MIX 43-2 <sup>(2)</sup>

<sup>(1)</sup> 020229-31-3-32

<sup>(2)</sup> 020250-31-3-32



**Hand transmitter Multibit**

1-channel hand transmitter, 433 MHz, with Multibit code

020001-31-3-32



**Hand transmitter Multibit**

4-channel hand transmitter, 433 MHz, with Multibit code

020002-31-3-32



**Receiver E43-ST**

In housing, for KeeLoq, 1 relay output, records 13 codes

020189-31-3-32

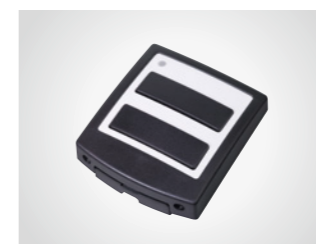
## IMPULSE SENSORS



**Push button DigiCode Premium**

Metal keyboard, 433 MHz, with KeeLoq rolling code

148710-40-1-50



**Push button DuoControl**

433 MHz, with KeeLoq rolling code

148740-40-1-50



**Finger print Biokey**

For 150 memory spaces

020220-31-3-32

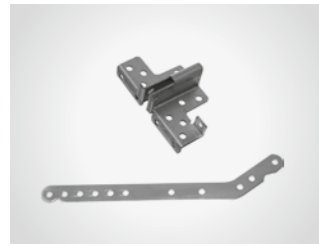


**Key switch KT 8 AP**

Double impulse, on-wall

050549-31-3-32

## DOOR FITTINGS



**Door fitting standard**

For up-and-over and sectional doors

150445-03-1-50



**Special door fitting**

Special flat type for up-and-over and sectional doors

150445-05-1-40



**Fitting for sectional doors**

For sectional doors with a slat height of 360 - 565 mm

150427-02-1-50



**All-purpose fitting**

For mounting with lintel for 450 - 610 mm lintel depth

147105-11-1-50

## SAFETY



**Integrated light barrier LS 2-I**

2-wire, operating range 8 m, for inside areas

148248-01-1-50



**Light barrier LS 5F**

Extra 625, operating distance 8 m

020412-31-3-32



**Emergency release with round cylinder**

For double-leafed doors, sliding overhead and sectional garage doors

147004-01-1-50



**Emergency release with profile half cylinder**

For double-leafed doors, sliding overhead and sectional garage doors

020241-31-3-32



**Traffic light control A 800 III**

With 10 m connecting cable, without radio receiver

150130-03-1-50



**Warning light LED red**

Flashing or steady light adjustable, 24 V AC/DC

148760-01-1-50



**TORMATIC®**

Eisenhüttenweg 6  
44145 Dortmund / Germany

T +49 231 56602-0  
F +49 231 56602-23

[info@tormatic.de](mailto:info@tormatic.de)  
[www.tormatic.de](http://www.tormatic.de)