



Roller Shutter Door Kits

- fast online configuration
- certified according to DIN EN 13241-1
- high quality components
- everything from one source

ferdinand
brasellmann.de

Diversity in profiles



Braselmann stands for maximum precision, quality and cost effectiveness in roller shutter profiles.

We have been producing cold rolled profiles for more than 80 years. Our customers value the reliable quality and variety of our roller door profiles. In 2005, when the DIN EN 13241-1 norm became a statutory requirement for all roller shutter doors, we made the decision to offer our customers complete roller shutter door kits which are tested and certified in their offered combination.

Complete, tailor-made configuration for intended use and pre-assembled - roller shutter door kits are gaining in popularity amongst our customers all over the world.

Roller shutter door kits - everything from one source.

Made to order, certified according to DIN EN 13241-1.



Single-walled roller shutter doors

Single-walled roller shutter doors prove to be extremely robust and resistant to bending in everyday use.

The selection includes curved and straight profiles in different materials, surfaces and colour coatings as well as perforated profiles, window and grid profiles.

-> page 4

Double-walled roller shutter doors

We recommend our double-walled roller door profiles where requirements for smooth operation and insulating properties are higher.

Depending upon model, they are provided with polystyrene foam, mineral wool or filled with polyurethane foam in a modern production process and satisfy the highest demands for stability, resistance and safety. They are also available in different materials and colour coatings.

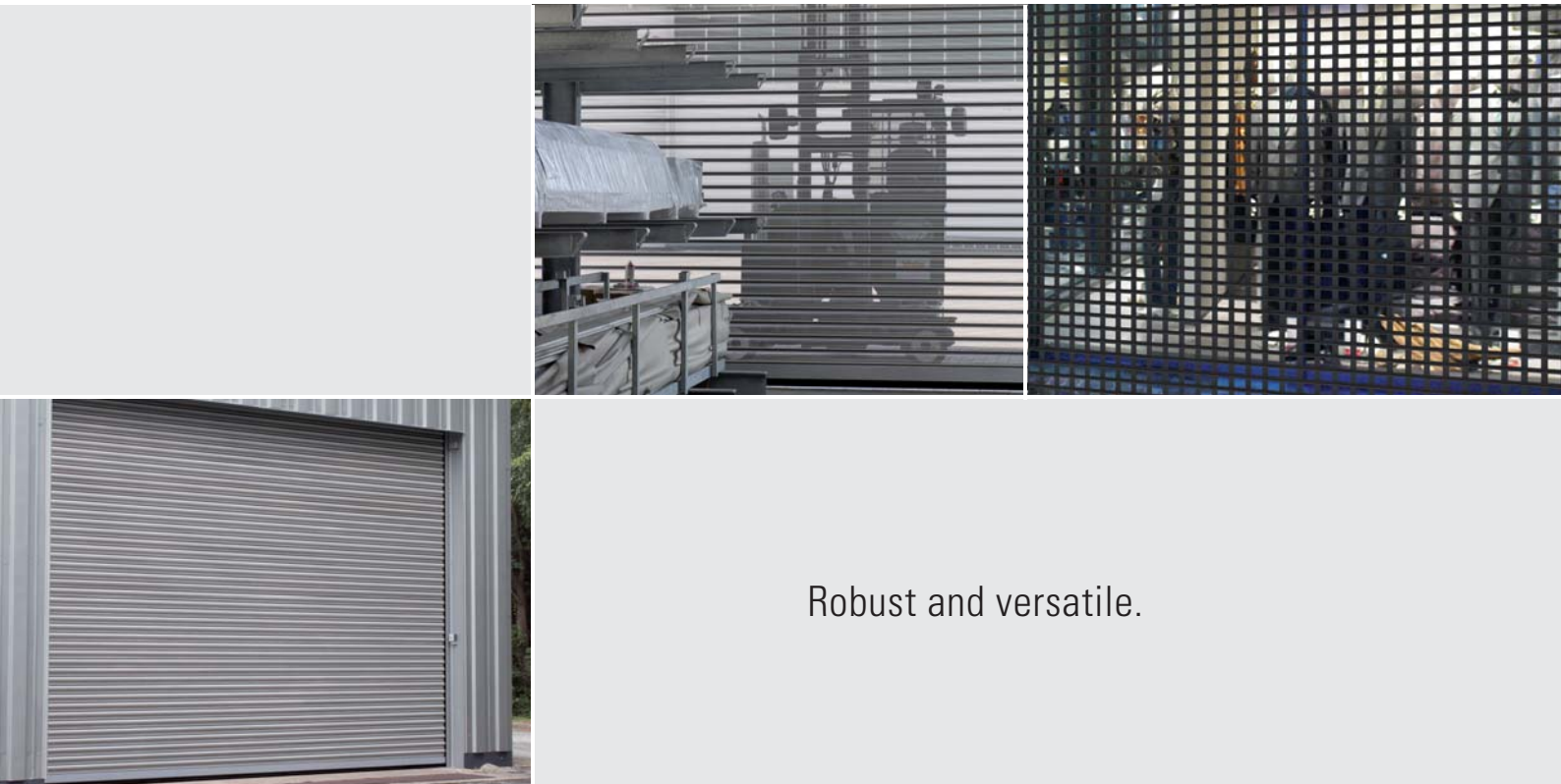
-> page 5

High speed roller shutter doors

The significantly reduced opening times of the high speed roller shutter doors not only ensure optimal operational processes, but also reduce heat losses through doors standing open.

A powerful microprocessor with inverter is available, providing smooth acceleration and soft braking to protect the materials as the door opens and closes. This allows the **average opening speed to be increased up to 0.8 m/s**, depending on the door height.

-> page 6



Robust and versatile.

Single-walled roller shutter doors



profile 1.1440



for small- and
medium-size doors



profile 1.1460



extra strong
for large doors and
increased loads



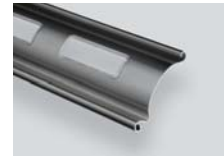
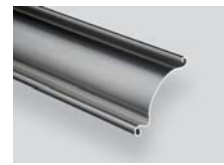
profile 1.1560



clear lines,
large cut-outs



profile 1.1620



robust, varied,
inexpensive



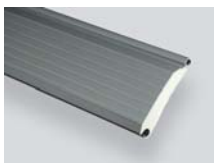
The convenient ones.



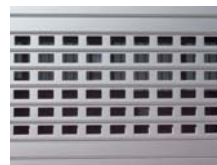
Double-walled roller shutter doors



profile 1.95 R



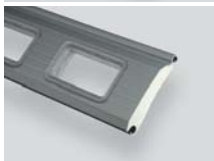
profile 1.100 D



profile 1.100 R



profile 1.D06



lightweight and quiet, 11 standard colour coatings

for small- and medium-size doors

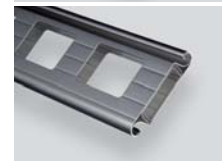


great stability, clear lines

also for very large dimensions



stable and low-noise, smaller bale diameter



for light and heat-insulating roller shutter doors

Further informationen at www.braselmann.de

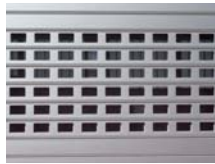
Quickly up.
And quickly back
down again.



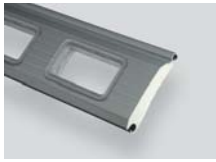
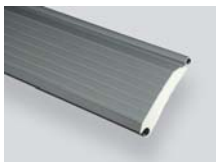
High speed roller shutter doors*



profile 1.95 R

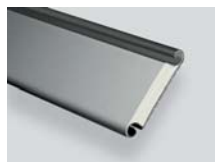


profile ISO-SL



lightweight and
quiet, 11 standard
colour coatings

for small- and
medium-size doors



Patented profile for
optimal smooth
functioning and
thermal insulation

*average opening speed up to 0.8 m/s (ISO-SL), max. 100 cycles/day



also mobile as an app for iPad®

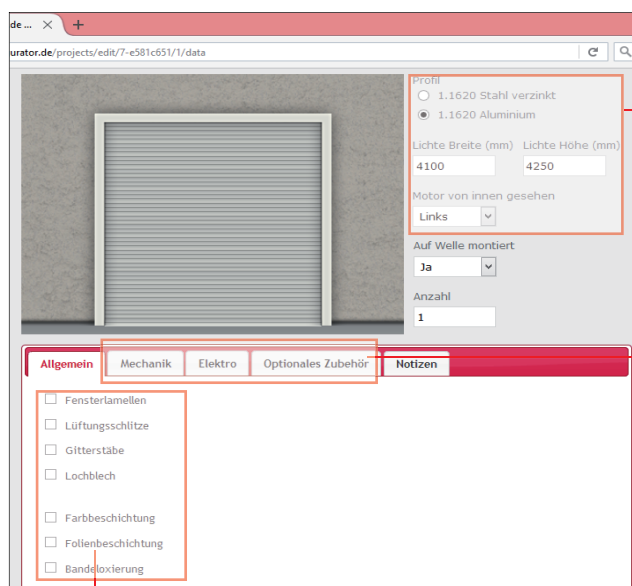


Braselmann.de



--> www.doorkitconfigurator.com
Price and drawings in a matter of minutes.
Configuration in a few steps:

Roller shutter door configuration



1

choose profile type
enter clear dimensions
select motor right / left

3

Optional:
add mechanical and electrical
extras to optimally adapt the
system to specific requirements.

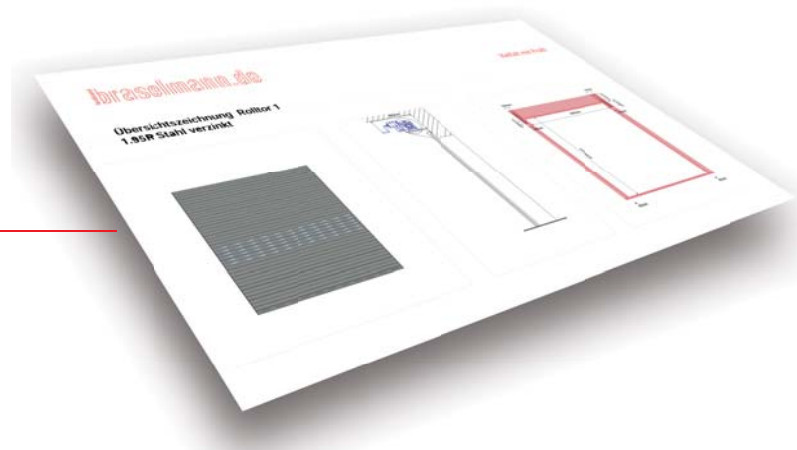
2

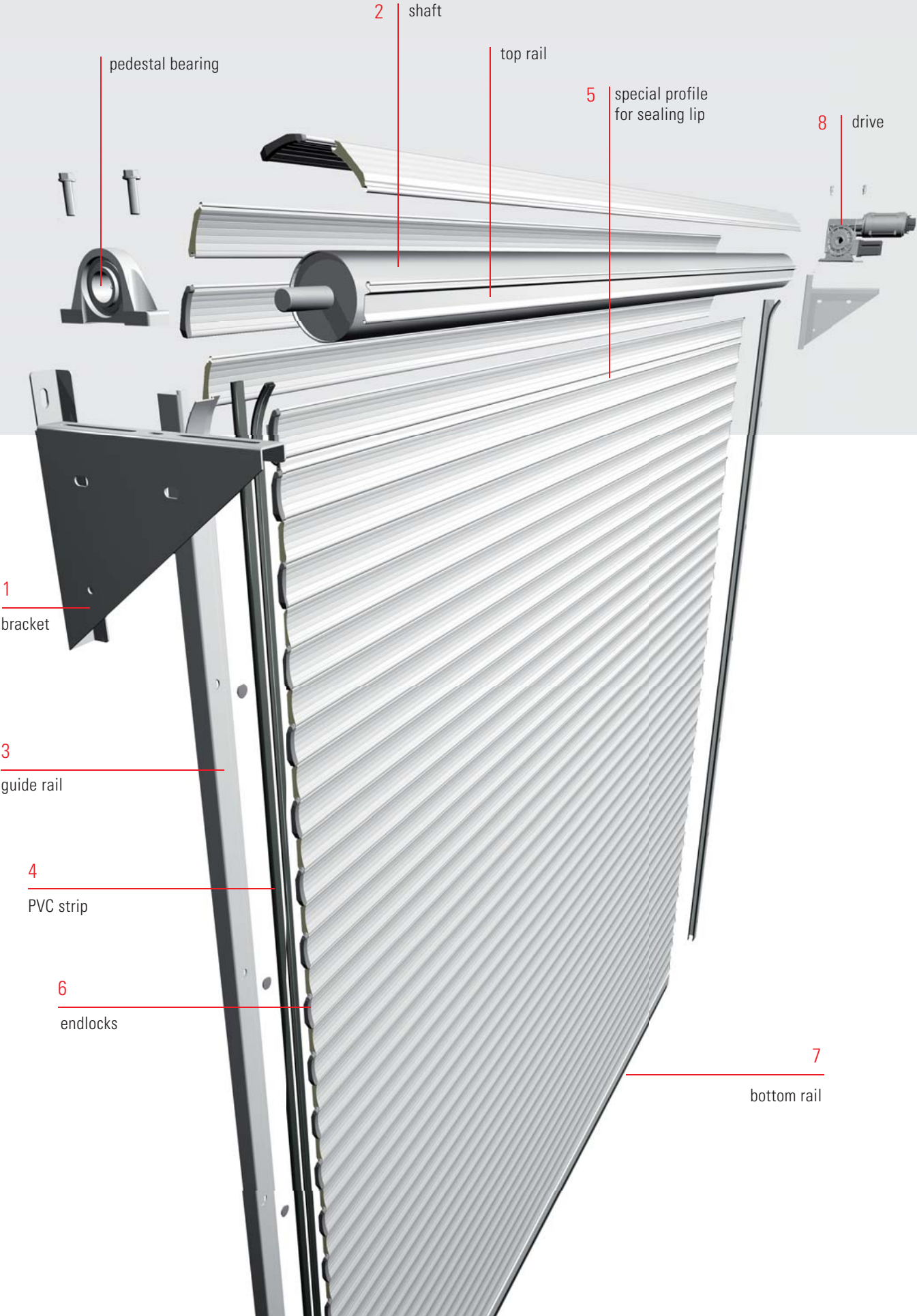
Optional:
choose design variants such as
window profiles and colour coatings

Ready.

An offer with prices* and drawings can now
be created and downloaded in PDF format.

* Only for registered users. Demo version without prices







Perfectly designed and fully wrapped.



Door structure

Our roller shutter doors are constructed from a small number of manageable components, which makes the assembly process fast and very economical. In particular, any repairs that become necessary will not break the bank.

1 | The two brackets for the drive and the pedestal bearing are sized according to the weight of the roller shutter and undergo testing to the laws of statics.

2 | Statics is also used to determine the diameter of the shaft on the basis of the width and weight of the roller shutter. The circular pieces (two on each side) are expertly welded to the shaft pins.

The stability of the roller shutter door under windload is verified by a TÜV-certified program, by default for wind class 3.

3 | The galvanised steel guide rails have an integrated lining. The predrilled fixing holes are closed with sealing caps.

The stability of the guide rails can be further increased with reinforcement brackets.

4 | Adhesive PVC strips are used to reduce noise and wear to the roller shutter profiles.

5 | In the area of the lintel of heat-insulated doors, the roller shutter has a special profile to hold an EPDM sealing lip.

6 | The end pieces of the slats are usually riveted. As of a certain door width, forged and hotdip galvanised storm hooks are also riveted on.

7 | The bottom rail is made of extruded aluminium and designed to hold safety EPDM rubber bottom seals.

A cover panel can also be made as an optional extra for small- and medium-size doors.

Drive

8 | The drive is a slip-on geared motor with integrated safety brake or a chain wheel drive or tubular motor with separate safety brake. It is sized according to the dimensions of the door system and can be installed on the right or the left.

A powerful microprocessor with inverter is available, providing smooth acceleration and soft braking to protect the materials as the door opens and closes. This allows the **average opening speed to be increased to 0.8 m/s**, depending on the height of the door.

A stationary photo-beam prevents the door closing if there are people or objects in the way.

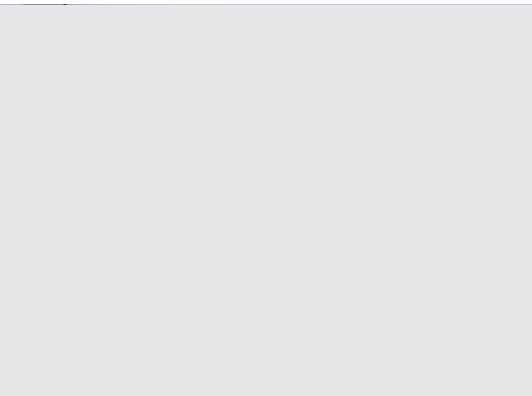
Door control

The roller shutter doors have a basic control system configured to „press-and-hold to close“/„press once to open“.

Other door control configurations can be selected.



Options for any use-case.



Optional equipment (selected examples)



Reinforcement brackets as additional anchorage for the guide rail

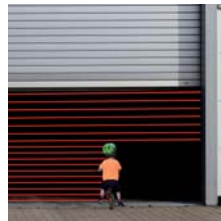


Cover box (for small- and medium-size doors)

A variety of **further options** for a wide range of use-cases can be found at www.doorkitconfigurator.com



Torque mount - if extra drive room required



Light curtain for even higher security



Bar lock for door width up to 6 m (finished dimension). Also with optional electronic sensor.



Emergency hand chain

Pulse generators

Individual functionality can be further customised with additional safety devices like infrared or radar motion sensors and a wide range of industrial pulse generators (switches, radio transmitters etc.)



Roll-up bracket (for smaller doors)



Forged storm hooks

Safety

Each door can be fitted with an electrically monitored bottom rail (safety edge). If the door is less than 2,500 mm in height, an additional safety photo-beam or a cover box will be necessary (option).



Tested according to
DIN EN 13241-1



Development - Testing - Certification

The design and manufacture of the machine tools takes place in-house, ensuring that the profiles have the highest precision and quality. It goes without saying that all profiles undergo intensive durability and safety testing in our own test rig, and they meet the requirements of **DIN EN 13241-1** in external testing.

Naturally, all other components like the safety brake, optical sensor and photo-beam meet the highest quality and safety standards, and have the necessary approvals.

The stability of the roller door profiles under wind load is determined by our own computer program, developed in conjunction with RWTH Aachen University and certified by TÜV Essen.

TÜV Essen has also issued the test certificates for sound insulation and heat transmission for galvanised roller shutters with the profile types 1.100 D, 1.95 R und ISO-SL.

TÜV NORD	
ZERTIFIKAT CERTIFICATE	
<small>Hiernit wird bescheinigt, dass das unten beschriebene Produkt der Firma This certifies that the product described below from company</small>	
Ferdinand Braselmann GmbH & Co. KG Kotthausstraße 15-23 58256 Ennepetal Germany	
<small>die Anforderungen der folgenden Normen erfüllt. meets the requirements of the following standards:</small>	
<small>Manufacturing plant</small>	Ferdinand Braselmann GmbH & Co. KG Kotthausstraße 15-23 58256 Ennepetal Germany
<small>Description of product (Details s. Anlage 1)</small>	Shutters with single walled or double walled roller door profiles in conjunction with plug in motor and chain wheel drive, with in the plug in motor integrated safety gear or with an external unwinding stopper.
<small>Tested in accordance with</small>	DIN EN 13241-1:2011 Anhang ZA.2.2 (System 3)
<small>Registrier-Nr. / Registered No. 44 799 12138001-002 Prüfbericht Nr. / Test Report No. 163906, 09 325 308457, 10 325 188492, 12 799 104840, 15795453752-1, 15795453752-2 Aktenzeichen / File reference 2-A-146/12 / 3517 6810</small>	<small>Gültigkeit / Validity von / from 2016-04-20 bis / until 2021-04-19</small>
 <small>TÜV NORD CERT GmbH Essen Zertifizierungsstelle Maschinen Certification Body Machinery</small>	<small>Essen, 2016-04-20</small>
<small>TÜV NORD CERT GmbH Langemarkstraße 20 · 45141 Essen</small>	<small>www.tuev-nord-cert.de machinery@tuev-nord.de</small>
<small>Bitte beachten Sie auch die umseitigen Hinweise Please also pay attention to the information stated overleaf</small>	



Company

Ferdinand Braselmann is a profile rolling mill with more than 130 years of experience in metal processing. We have more than 80 years of experience in cold rolled metal profiles, and pioneered roller shutter door technology with the invention of the double-walled roller shutter profile in 1960.

Even today, cutting-edge technology and the highest quality mean our roller shutter doors are still the right choice.